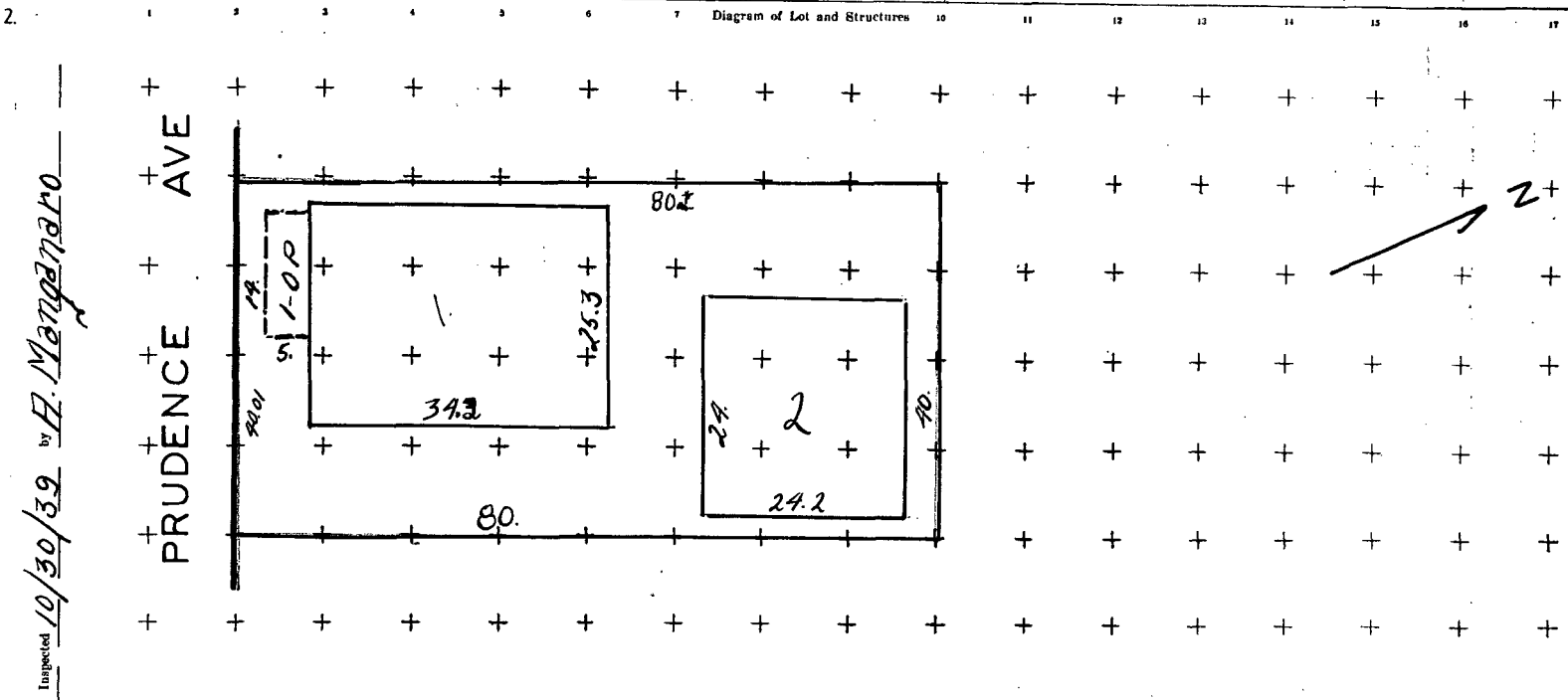


Line NO.	144 PRUDENCE AVE				St. Ave.	N	side	FRONTAGE	DEPTH	PLAT No.	BLOCK No.	LOT No.	REPUTED OWNER									
1								40.01	80.0	109	12	33	Mary Furia									
2	IMPROVEMENT ITEM	USE GROUP	CONSTR. TYPE	QUALITY GRADE	STORIES		ROOF TYPE	No. of ELEV.		YEAR		OBSERVED CONDITION	COMPARATIVE AGE	FLOOR NUMBER	RESIDENTIAL USE			OTHER USE				
3	1	R3	A	2-	2 1/2	Full	Gable	Pass.	Frgt.	Built	Reconditd.	F	20		Class	Area	Rooms	Baths	Use	Class	Area	
4	1-OP		A	2	2	Piers	1/2 Hip					F										
5	2	R8	C	1+	1	None	Shed					F										
6																						
7																						
8																						

9	CONDITION	CONSTR. FEATURE	GRADE 1	GRADE 2	GRADE 3	GRADE 4	GRADE 5	GRADE 6		
10	F	GENERAL CHARACTERISTICS	Minimum amount of material	Low cost types of material	Medium cost types of material	Preferred types of material	Costly materials	Costliest materials		
11			F	EXTERIOR WALLS	Low grade composition cover	Good composition cover	Good wood or asbestos cover	High grade wood cover	Select grade wood cover	Selected wood, special trim
12					G	ROOF AND ROOFING	Low grade wood shingles	Medium grade wood shingles	Tar and gravel built-up, 5-ply	Asbestos or common slate shngls.
13	F	FLOORS AND FLOORING					Cheap flooring	Common flooring, well laid	Plain hardwood flooring	Good hardwood flooring
14			F	DOORS AND WINDOWS			Light pine doors	Medium pine doors, or equal	Medium hardwood doors	Good hardwood doors
15					F	STAIRS	Narrow stairs	Medium width stairs	Wide stairs	Well-built stairways
16	F	INTERIOR FINISH					Minimum amount of cheap trim	Ordinary pine trim, or equal	Good grade of stock trim	Best grade of stock trim
17			F	BUILT-IN FEATURES			Open shelving	Kitchen cabinet, plain	China and linen closets	Bookcases and window-seats
18					G	FIREPLACE and CHIMNEY	Small amount of open shelving	Kitchen cabinet, plain	China and linen closets	Bookcases and window-seats
19	F	PLUMBING AND FIXTURES					None	Small gas-burning	Wood-burning, plain fireplace	Wood-burning, good fireplace
20			G	LIGHTING AND FIXTURES			Small single-flue chimney	No. of chimneys	No. of chimneys	No. of chimneys
21					G	FOUNDATION	Kitchen sink	Kitchen sink	Some kitchen & laundry equip.	Good kitchen & laundry equip.
22	F	BASEMENT					Water closet	Complete bathroom, wood floor	Bathroom, shower attachment	Bathroom, tile floor and walls
23			F	HEATING			Enameled iron fixtures	Cheap vitreous fixtures	Tile floor & protected walls	Half-bathroom, wood floor
24					F	HEATING	Minimum drainage system	Good drainage system	Medium quality fixtures	Good quality fixtures
25	G	FOUNDATION					None	K & T or exposed conduit	Armored cable	Armored cable, well anchored
26			F	BASEMENT			Few service outlets	Well lighted and serviced	Numerous outlets and switches	Well serviced thruout
27					F	BASEMENT	Cheap stamped metal fixtures	Good stamped metal fixtures	Ordinary cast metal fixtures	High grade stock fixtures
28	G	FOUNDATION					Wood posts or sills	Common brick or good block	Good common brick	Rough-dressed stone
29			F	BASEMENT			Cheap concrete block	Rough quarried stone	Stone or brick walls, plaster	Concrete, well-finished
30					F	BASEMENT	Field stone or quarry spalls	Stucco on block or brick	Concrete, plain or stuccoed	Face brick on block or brick
31	F	BASEMENT					Field stone or rough conc. walls	Quarry stone or brick walls, plaster	Concrete walls, bare	Concrete walls
32			F	BASEMENT			Field floor	Wood, asphalt or light conc. floor	Concrete floor	Concrete floor, finished
33					F	BASEMENT	No partitions	Rough board partitions	M & D or brick partitions	1/2 area partitioned & finished
34	F	BASEMENT					Low headroom	Scant headroom	Full headroom	Ample headroom
35			F	BASEMENT			Stove	Stove	Warm-air furnace, piped	Warm-air furnace: cold air returns
36					F	BASEMENT	Stove	Stove	Steam heating system	Steam or hot-water system
37	F	BASEMENT					Stove	Stove	Oil burner	Oil burner or mechanical stoker
38			F	BASEMENT			Stove	Stove	Oil burner	Oil burner or mechanical stoker
39					F	BASEMENT	Stove	Stove	Oil burner	Oil burner or mechanical stoker
40	F	BASEMENT					Stove	Stove	Oil burner	Oil burner or mechanical stoker
41			F	BASEMENT			Stove	Stove	Oil burner	Oil burner or mechanical stoker
42					F	BASEMENT	Stove	Stove	Oil burner	Oil burner or mechanical stoker
43	F	BASEMENT					Stove	Stove	Oil burner	Oil burner or mechanical stoker
44			F	BASEMENT			Stove	Stove	Oil burner	Oil burner or mechanical stoker
45					F	BASEMENT	Stove	Stove	Oil burner	Oil burner or mechanical stoker
46	F	BASEMENT					Stove	Stove	Oil burner	Oil burner or mechanical stoker
47			F	BASEMENT			Stove	Stove	Oil burner	Oil burner or mechanical stoker
48					F	BASEMENT	Stove	Stove	Oil burner	Oil burner or mechanical stoker
49	F	BASEMENT					Stove	Stove	Oil burner	Oil burner or mechanical stoker
50			F	BASEMENT			Stove	Stove	Oil burner	Oil burner or mechanical stoker
51					F	BASEMENT	Stove	Stove	Oil burner	Oil burner or mechanical stoker
52	F	BASEMENT					Stove	Stove	Oil burner	Oil burner or mechanical stoker
53			F	BASEMENT			Stove	Stove	Oil burner	Oil burner or mechanical stoker
54					F	BASEMENT	Stove	Stove	Oil burner	Oil burner or mechanical stoker
55	F	BASEMENT					Stove	Stove	Oil burner	Oil burner or mechanical stoker
56			F	BASEMENT			Stove	Stove	Oil burner	Oil burner or mechanical stoker
57					F	BASEMENT	Stove	Stove	Oil burner	Oil burner or mechanical stoker
58	F	BASEMENT					Stove	Stove	Oil burner	Oil burner or mechanical stoker
59			F	BASEMENT			Stove	Stove	Oil burner	Oil burner or mechanical stoker
60					F	BASEMENT	Stove	Stove	Oil burner	Oil burner or mechanical stoker
61	F	BASEMENT					Stove	Stove	Oil burner	Oil burner or mechanical stoker
62			F	BASEMENT			Stove	Stove	Oil burner	Oil burner or mechanical stoker
63					F	BASEMENT	Stove	Stove	Oil burner	Oil burner or mechanical stoker
64	F	BASEMENT					Stove	Stove	Oil burner	Oil burner or mechanical stoker
65			F	BASEMENT			Stove	Stove	Oil burner	Oil burner or mechanical stoker
66					F	BASEMENT	Stove	Stove	Oil burner	Oil burner or mechanical stoker
67	F	BASEMENT					Stove	Stove	Oil burner	Oil burner or mechanical stoker
68			F	BASEMENT			Stove	Stove	Oil burner	Oil burner or mechanical stoker
69					F	BASEMENT	Stove	Stove	Oil burner	Oil burner or mechanical stoker
70	F	BASEMENT					Stove	Stove	Oil burner	Oil burner or mechanical stoker
71			F	BASEMENT			Stove	Stove	Oil burner	Oil burner or mechanical stoker
72					F	BASEMENT	Stove	Stove	Oil burner	Oil burner or mechanical stoker
73	F	BASEMENT					Stove	Stove	Oil burner	Oil burner or mechanical stoker
74			F	BASEMENT			Stove	Stove	Oil burner	Oil burner or mechanical stoker
75					F	BASEMENT	Stove	Stove	Oil burner	Oil burner or mechanical stoker
76	F	BASEMENT					Stove	Stove	Oil burner	Oil burner or mechanical stoker
77			F	BASEMENT			Stove	Stove	Oil burner	Oil burner or mechanical stoker
78					F	BASEMENT	Stove	Stove	Oil burner	Oil burner or mechanical stoker
79	F	BASEMENT					Stove	Stove	Oil burner	Oil burner or mechanical stoker
80			F	BASEMENT			Stove	Stove	Oil burner	Oil burner or mechanical stoker
81					F	BASEMENT	Stove	Stove	Oil burner	Oil burner or mechanical stoker
82	F	BASEMENT					Stove	Stove	Oil burner	Oil burner or mechanical stoker
83			F	BASEMENT			Stove	Stove	Oil burner	Oil burner or mechanical stoker
84					F	BASEMENT	Stove	Stove	Oil burner	Oil burner or mechanical stoker
85	F	BASEMENT					Stove	Stove	Oil burner	Oil burner or mechanical stoker
86			F	BASEMENT			Stove	Stove	Oil burner	Oil burner or mechanical stoker
87					F	BASEMENT	Stove	Stove	Oil burner	Oil burner or mechanical stoker
88	F	BASEMENT					Stove	Stove	Oil burner	Oil burner or mechanical stoker
89			F	BASEMENT			Stove	Stove	Oil burner	Oil burner or mechanical stoker
90					F	BASEMENT	Stove	Stove	Oil burner	Oil burner or mechanical stoker
91	F	BASEMENT					Stove	Stove	Oil burner	Oil burner or mechanical stoker
92			F	BASEMENT			Stove	Stove	Oil burner	Oil burner or mechanical stoker
93					F	BASEMENT	Stove	Stove	Oil burner	Oil burner or mechanical stoker
94	F	BASEMENT					Stove	Stove	Oil burner	Oil burner or mechanical stoker
95			F	BASEMENT			Stove	Stove	Oil burner	Oil burner or mechanical stoker
96					F	BASEMENT	Stove	Stove	Oil burner	Oil burner or mechanical stoker
97	F	BASEMENT					Stove	Stove	Oil burner	Oil burner or mechanical stoker
98			F	BASEMENT			Stove	Stove	Oil burner	Oil burner or mechanical stoker
99					F	BASEMENT	Stove	Stove	Oil burner	Oil burner or mechanical stoker
100	F	BASEMENT					Stove	Stove	Oil burner	Oil burner or mechanical stoker



24	LAND DATA		LAND IMPROVEMENTS		ESTIMATED COST	IMPROVEMENT QUANTITY DATA		WIDTH	LENGTH	AREA	HEIGHT	VOLUME
25	Acreage					55 1 House		25.3	34.2	865	32.0	S 22310
26	Subdivided		X			56 1-OP Open Por.		5.0	14.0	70	16.0	
27	Street W. & Type		20-M			57 2 Garage		24.0	24.2	580	10.6	S 6140
28	Paving Condition		F			58						
29	Sewer		X			59						
30	Water		X			60						
31	Gas		X			61						
32	Electricity		X			62						
33	Topography and estimated cost of bringing to vicinity std.		Standard			63						
34						64						
35	Zoned as		Ind.			65						
36	Used as		Res.			66						
37	Front		40.01			67						
38	Rear		40			68						
39	Ave depth		80±			69						
40	Area, actual		3201			70						
41	Depth factor		1.118			71						
42	Shape factor		-			72						
43	Equiv. feet 40 x 41 x 42		3580			73						
44	Base price		.13			74						
45	43 x 44		465			75						
46	VALUE, BEFORE ADDITIONS (total of 45)		465			76						
47	Add for					77						
48						78						
49						79						
50	VALUE, AFTER ADDITIONS (46 plus 47-49)					80						
51	Deduct for					81						
52						82						
53						83						
54	VALUE, AFTER DEDUCTIONS (50 minus 51-53)		465			84						